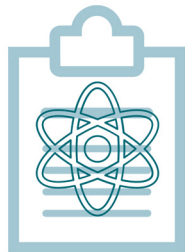


# Best Practice Recommendations



## Return of Results for Clinical Trial Participants

**Build a knowledge translation strategy into your research plan!**

**Support and enable study staff with tools for communicating with participants**

e.g. create guidance with sample responses to common questions, support participant education and awareness

**Plan and manage expectations of what information participants will be provided from commencement of study**

e.g. have clear upfront discussions with participants and check-ins throughout the study, provide information about process and timeline for clinical trial

**Ensure study outcomes are accessible and provide options when possible**

e.g. avoid jargon, use accessible language, provide options for receiving study information i.e. email, social media, published journal, website updates

**When the study ends, say “thank you”**

e.g. acknowledge participants’ contributions, consider a thank you card or personalized note

*“I would have liked to have the study follow up to me directly about my results.”*

*-Clinical trial participant*