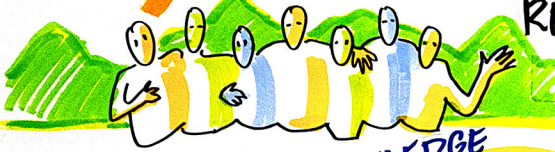


# BC SUPPORT UNIT • PHASE II RETREAT

JUNE 28-29, 2022

## INDIGENOUS CULTURAL SAFETY L.E.N.S for developing VALUES



- IT'S ABOUT RELATIONSHIPS
- EACH OTHER
  - THE LAND
  - OUR ANCESTORS
  - FUTURE GENERATIONS

WE NEED TO ACKNOWLEDGE OUR CONNECTIONS

## PROTOCOLS: The GLUE that holds us TOGETHER



**COLONIZATION** is an ASSAULT on authentic relationships

**DECOLONIZATION** brings us back together

Acknowledging challenges, fears, trauma helps us to be KIND to each other

TRC 94 CALLS TO ACTION

DRIPA

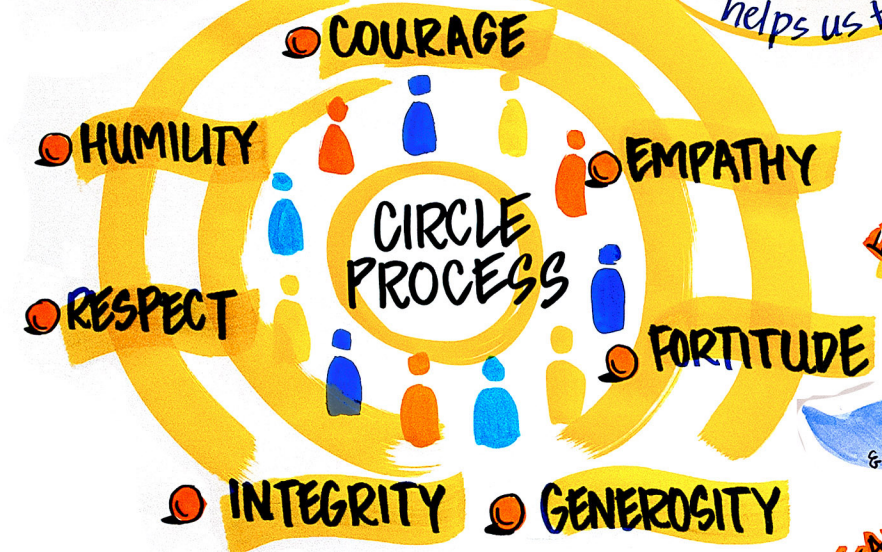
OTHERS...

IN PLAIN SIGHT

PATHS TO RECONCILIATION

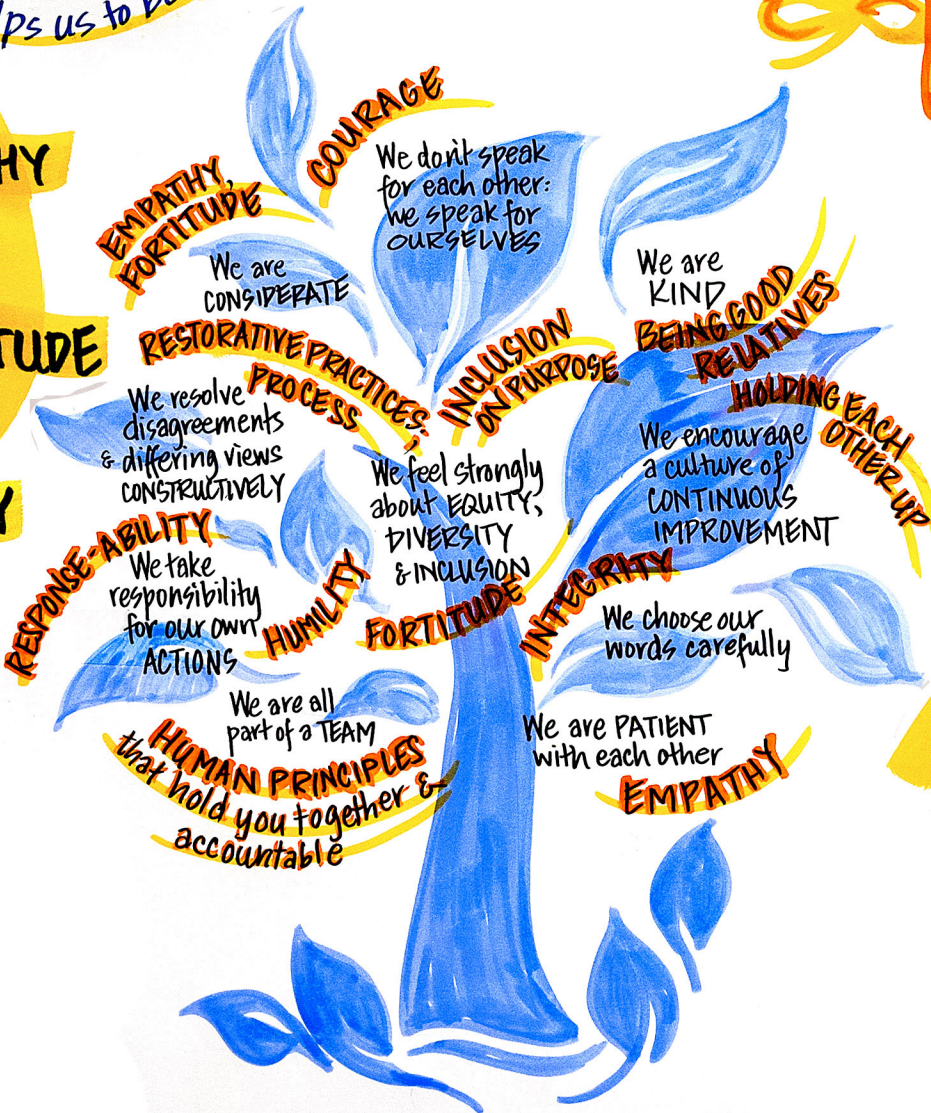
### WHAT WE HEARD FROM EACH OTHER

- GENEROSITY** HELP OTHERS WHEN YOU NOTICE THEY'RE STRUGGLING
- HUMILITY** ACKNOWLEDGE WHEN WE'RE WRONG... ASK FORGIVENESS
- FEARLESSNESS** DON'T BE AFRAID TO ADMIT WHEN I'M STRUGGLING
- GO SLOW IN ORDER TO MOVE FAST**
- CONTINUOUS IMPROVEMENT**
- TEAMWORK** BETTER TOGETHER
- STRIVE TO BECOME BETTER LISTENERS** LISTEN WITH INTEREST & UNDERSTANDING BEFORE RESPONDING

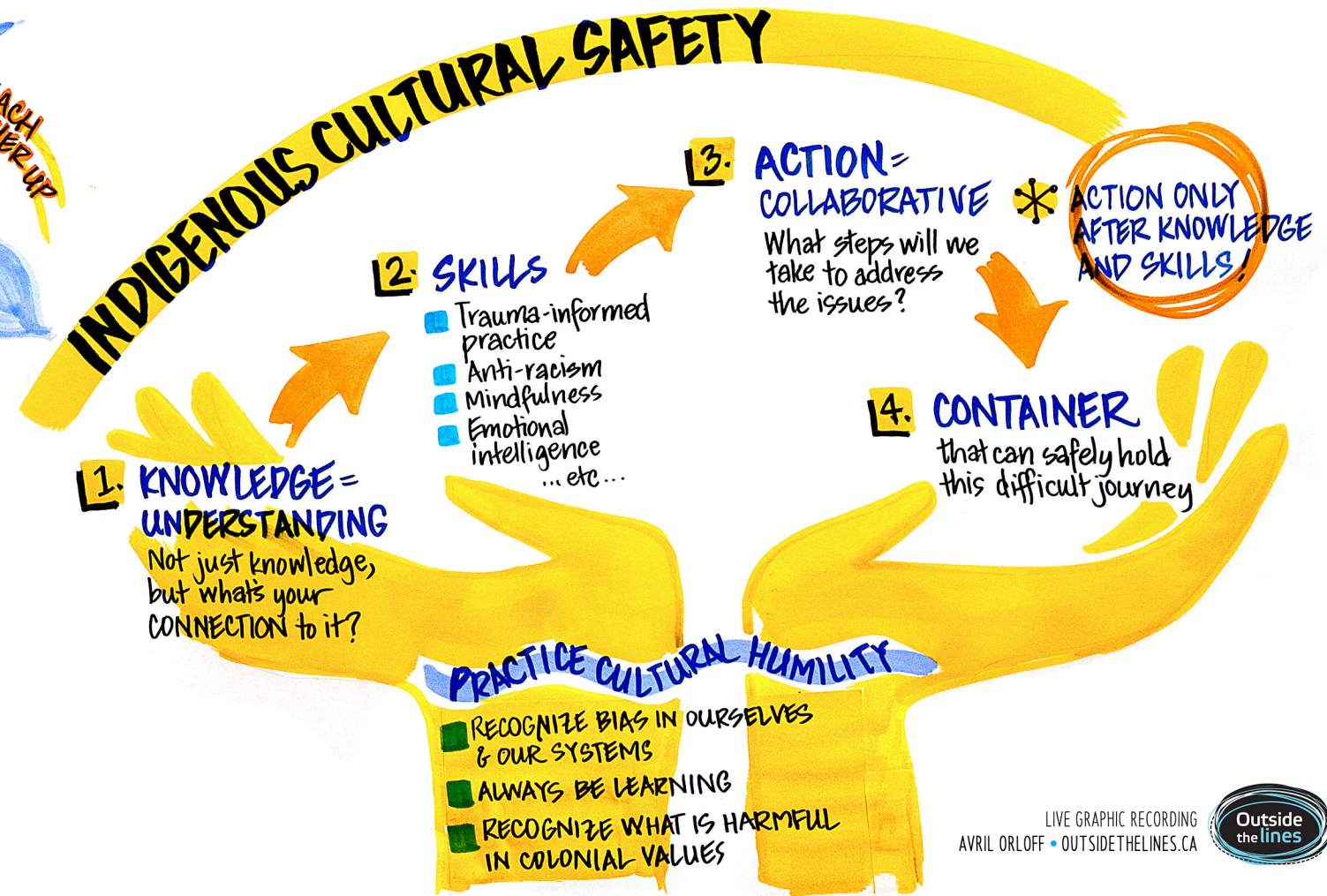


A PROCESS OF ...

- RESISTANCE & HEALING
- DECOLONIZING & PRACTICING VALUES



## ICS LENS to VALUES DEVELOPMENT



- ### PRACTICE CULTURAL HUMILITY
- RECOGNIZE BIAS IN OURSELVES & OUR SYSTEMS
  - ALWAYS BE LEARNING
  - RECOGNIZE WHAT IS HARMFUL IN COLONIAL VALUES





# FRASER CENTRE

HOW TO PROVIDE SERVICES WITH A REDUCED BUDGET?

- PRIORITY 1: SERVICE REDESIGN**
  - What's available?
  - What needs to change?
  - Opportunities for collaboration?

WORKING SMARTER, NOT HARDER!



**PRIORITY: PATIENT ENGAGEMENT**

BUILD, STRENGTHEN & LEVERAGE RELATIONSHIPS WITH OTHER PATIENT ENGAGEMENT ENTITIES

- PRIORITY 2: EVIDENCE SERVICE**

- PRIORITY 4: INDIGENOUS PROTOCOL GUIDELINES FOR RESEARCH & EVALUATION**

- PRIORITY 3: FRASER HEALTH FACULTY FELLOWS**

# ISLAND CENTRE

- PRIORITY: LEARNING HEALTH SYSTEMS**

LEARNING HEALTH SYSTEM DEVELOPMENT

RELATIONSHIP BUILDING & NETWORKING

CONSULTATION & RESEARCH SERVICES

- PRIORITY: CAPACITY DEVELOPMENT & CAPACITY BUILDING**

SUPPORT NEXT GENERATION OF PATIENT-ORIENTED RESEARCHERS

EMBED POR & LHS IN ACADEMIC TRAINING

- PRIORITY: DATA**

SUPPORT PATIENT-ORIENTED DATA GENERATION AND ACCESS

# INTERIOR CENTRE



COLLABORATION WITH PEIR

CONSULTATION W/INTERIOR HEALTH STAFF & INTERIOR CENTRE

CAPACITY DEVELOPMENT

12 ACTIVITIES & SERVICES TO PRIORITIZE

DATA PLATFORMS & SERVICES

PATIENT ENGAGEMENT

LEARNING HEALTH SYSTEMS

- PRIORITIES:**
- Drive patient-led research
  - Increase visibility
  - Support POR activities
  - Explore POR integration into post-secondary
  - Mentor Leadership students
  - Continue integration of members within Interior Health

SUPPORT LHS DEMO PROJECT

HOST OR CO-HOST EVENTS  
E.G. 5 DAYS IN MAY

EXPLORE COLLAB. W/BC NEIHR

DEVELOP CURRICULUM OF KT WORKSHOPS

EXPAND SERVICES TO HEALTHCARE DECISION-MAKERS & PROVIDERS

# NORTHERN CENTRE

- PATIENT ENGAGEMENT**

POR

REACH BC

NATIONAL COLLAB. CENTRE FOR INDIGENOUS HEALTH

- CAPACITY DEVELOPMENT**

KT & EXCHANGE OPPORTUNITIES

CONFERENCES

UNBC STUDENT ENGAGEMENT

EVENTS

NH RESEARCH REVIEW COMMITTEE

BC NEIHR

BC SUPPORT UNIT RESEARCH SERVICES NETWORK

SPOR FUNDED ENTITIES

HEALTH PROFESSIONALS INVESTIGATOR PROGRAM WORKSHOPS

- LEARNING HEALTH SYSTEM**

Build capacities for LHS competencies & initiatives that incorporate POR & KT practices

- DATA**

REDCAP

HEALTH DATA RESEARCH NETWORK

HEALTH DATA PLATFORM

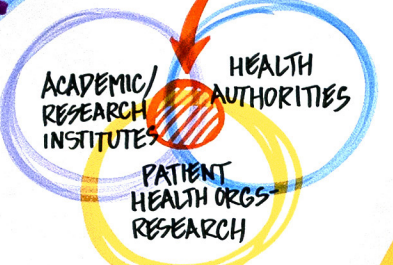
Everything we do in the North is a COLLABORATION





# VANCOUVER

WHERE RESEARCH HAPPENS



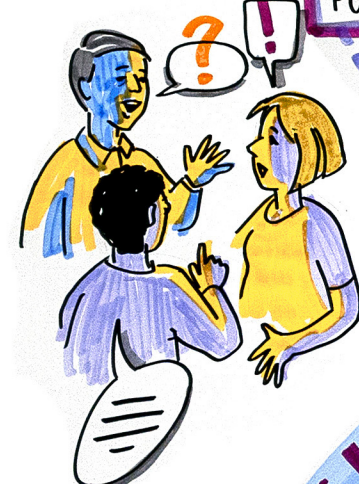
ACADEMIC HEALTH RESEARCHERS REQUESTS FOR POR SUPPORTS

## 1. CONSULTATION

Focus on patient engagement



CAPACITY BUILDING  
Common training & supports



## 3. [POR 202+]

BUILD CAPACITY for SUSTAINABLE & MEANINGFUL ENGAGEMENT w/PATIENT, PUBLIC & COMMUNITY PARTNERS

## 2. BUILDING AWARENESS [POR 101]



BC PATIENT-ORIENTED PRACTICE-BASED RESEARCH COLLABORATION

VCHRI INTERNAL FUNDING

2022 HEALTH PROFESSIONAL INVESTIGATOR AWARD

# ACTIVITIES

# BC NEIHR



OVER 16 YR. \$100.8 MILLION NEIHR PROGRAM

## STRONGLY ADHERE to RESEARCH PRINCIPLES of OCAP

- Ownership
- Control
- Accessibility
- Possession

## RESEARCH MUST BE CONDUCTED WITH, NOT ON INDIGENOUS PEOPLE

DATA MUST BE COLLECTED IN A GOOD WAY:

- Relational
- Respectful use of people's stories
- Accessible

TOTAL FUNDING 2022  
\$130,000 for Indigenous ICCOs

TOTAL FUNDING 2020-21  
\$435,360 for Indigenous trainees

## WE VALUE



# PATIENT LEADERSHIP COUNCIL



Diverse partnership-ready network

VANCOUVER CENTRE

LEADERSHIP COUNCIL

INTERIOR CENTRE PEIR COMMITTEE

ISLAND CENTRE OVERSIGHT COMMITTEE

Supported by provincial coordinating office

FRASER CENTRE OVERSIGHT C'TEE & R2P2 GROUP

NORTHERN CENTRE

OTHER

## MAIN FOCUS: RELATIONSHIPS

COMMUNICATION IS KEY!

## SUCCESS OF THE MODEL DEPENDS ON MAINTAINING CONTACT WITH PPs AND PROVIDING ENGAGEMENT OPPORTUNITIES





# REFLECTIONS

## COMMUNICATION & COLLABORATION

- HAVING the OPPORTUNITY TO HEAR AND BE HEARD IS REALLY IMPORTANT

- LACK OF PUBLIC TRUST IN RESEARCH

- UNDERSTAND SIMILARITIES AND DIFFERENCES BETWEEN REGIONS

- HOW WE CAN FOSTER CONVERSATIONS

- MENTORSHIP AT DIFFERENT LEVELS

- CULTURAL SAFETY

- RELATIONSHIPS & PARTNERSHIPS ARE FOUNDATIONAL

- RELATIONAL ACCOUNTABILITY

- FOCUS ON EPI, SEX & GENDER COMPONENTS & ANALYSIS

DATA ACCESS IS A WICKED PROBLEM!

- Ensure data is used in the right way
- Governance of data
- How data is used/shared

- CREATE MOUs w/COMMUNITIES THAT DEMONSTRATE BEST PRACTICES

WHO'S INVOLVED?

- UNKNOWNNS in INTERNAL POLICIES & PROCESSES & STRUCTURES

- COMMUNICATION & SHARING
  - Internally
  - Externally

- SUSTAINABILITY

- FOCUS ON IMPACT FOR PATIENTS

- WORK WITH INDIGENOUS PEOPLES

- ENGAGE HEALTH CARE PROVIDERS & DECISION-MAKERS

- VALUE OF GETTING TOGETHER & GETTING the "HELICOPTER VIEW"

- SEEING THE COLLECTIVE INTELLIGENCE IN THE ROOM

- HOW TO REACH HARD-TO-REACH GROUPS?

- Researchers
- Population groups

- OVERALL SUPPORT UNIT MANDATE IS NOT CLEAR

- HONOUR DIVERSITY & ALSO WHAT IS SHARED

- AWARENESS OF H.A. MANDATES

- ALIGN WHERE POSSIBLE

- CLARITY ON TERMINOLOGY IS NEEDED

- MOVE BEYOND THE LOW-HANGING FRUIT

COMMUNICATION & CONNECTEDNESS

COLLABORATION

RELATIONSHIPS

PATIENT-CENTRED





# LOOKING FORWARD WHAT COULD A PROVINCIAL PLAN LOOK LIKE?

- UNDERSTAND & ALIGN WITH MANDATES OF:**
- MINISTRY OF HEALTH
  - HEALTH AUTHORITIES
  - OTHER DECISION-MAKERS
  - PATIENTS
  - PROVIDERS

... and flexibility to ADAPT over time

**MENTORSHIP**

**EVIDENCE SYNTHESIS**

RIGHT EVIDENCE FOR DECISION-MAKING

Understand what counts as evidence

**DATA:**

- WHAT'S THERE
- WHAT WE CAN USE
- HOW USE IT

LHS INDICATORS & DATA

**COMMUNICATION PLAN TO HIGHLIGHT IMPACT of the WORK**

- Support regions in sharing info, creating better tools & mechanisms

Data

Stories

**CONSCIOUS RECOGNITION of AUTHENTIC ENGAGEMENT**

- Recognize diversity of the regions
- Celebrate & empower

**PROVINCIAL PLAN to INCLUDE EDI & INDIGENOUS LEADERSHIP**

- Elevate leadership role of BC NEHR

**PATIENT PARTNER GROUP IN EACH CENTRE**

- Connected to each other
- Connected to provincial entity

**INCREASE VISIBILITY of PATIENT ENGAGEMENT COMMITTEES**

→ to demonstrate IMPACT & VALUE

**DEVELOP WORK GROUP TO LOOK AT STRATEGIES FOR SUSTAINABILITY**

→ Share across regions

**HEALTH SYSTEM IDENTIFY MISSING NEEDS to DEVELOP BETTER STRATEGIES**

**USE INDIGENOUS CULTURAL SAFETY LENS**

→ Approach research from NATION TO NATION engagement perspective

**INDIGENOUS SYMPOSIUM**

→ Move to different locations each year

Advocate for POR to be part of CIHR fellowships

**STRATEGY FOR FELLOWSHIP FOR UP & COMING TRAINEES & SPECIALISTS**

Funding  
Coordination  
Support

**ASSESS BARRIERS to ENGAGEMENT for other unsupported groups**

Continuum of research, including implementation and KT

WHAT GOES IN? HOW CAN WE USE IT?

**IMPLANT CURRICULUM ON POR INTO EDUCATIONAL INSTITUTIONS**

Health system Trainees

Implement specialists

**BROAD APPROACH to reaching across different disciplines**

REPOSITORY OF BEST PRACTICES & RESOURCES

## ELEVATE to PROVINCIAL PLAN